

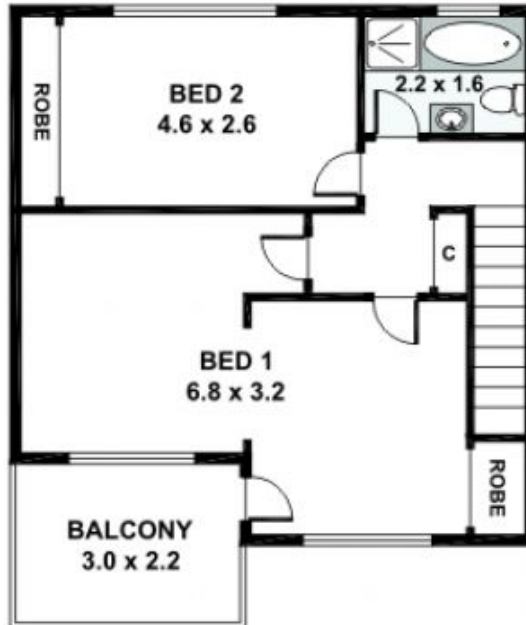
**8/108 Wattle Avenue CARRAMAR NSW**

2 1 1

This well presented town house is situated in neat complex.  
+ Offering separate lounge and dining,  
+ Kitchen overlooking back yard,  
+ Two Generous size bedrooms, built in ward robe,  
Bathroom,  
+ Tiled thru out living areas, split system air-condition units  
+ Low maintenance back yard, Lock up garage.  
+ Located only a minutes walk to railway station, Bus services, local shops, and sporting fields.  
Ideal Start or Smart Investment a must to inspect!

**Type** : Townhouse  
**View** : <https://www.rangeagents.com/8507331>

# 8/108 Wattle Ave, Carramar



**FIRST LEVEL**



**GROUND LEVEL**

Please note: All stated dimensions are approximate only. Particulars given are for general information only and do not constitute any representation on the part of the vendor or agent.